



ZODIAC

PRESS RELEASE

Zodiac International's revolutionary MINUTEMAN with RAPID ACCESS DOOR Inflatable wins prestigious 'SPIRIT OF INNOVATION' AWARD at Seawork 2006.

The new Zodiac model, the revolutionary **MINUTEMAN with RAPID ACCESS DOOR**, was entered into the Innovation Award Scheme at SEAWORK 2006, where it gained 1st place in the Vessel Design & Build category and also took the title of overall winner in the competition. At Seawork's Gala dinner, Gerry Weisgerber, representing Zodiac International, accepted the coveted 'SPIRIT OF INNOVATION' trophy along with the design and build award for the MINUTEMAN with RAPID ACCESS DOOR.

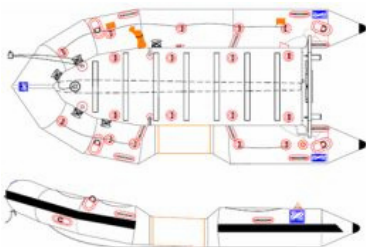
The MINUTEMAN with RAPID ACCESS DOOR, (exhibited as a world exclusive), can be inflated from its source of compressed air in just sixty seconds and requires no assembly, thanks to its specialised inter-communicating valve system and Duratene™ PU high-pressure inflatable deck. Propelled by either paddles or an outboard motor (up to 30hp), the 67kg MINUTEMAN can be made ready 'from its bag' – as its name implies – in just one minute. It can therefore be launched at speed and with ease, so First Responder rescuers can get to victims in the water in double quick time, greatly increasing the chances of a successful rescue – made easier still by its revolutionary patent pending **RAPID ACCESS DOOR** making recovery of a person simpler and quicker.

The implications for improved speed of rescue and the multitude of applications suitable for the MINUTEMAN with RAPID ACCESS DOOR mean the boat is truly innovative. The concept and design of the MINUTEMAN is the brainchild of Noemie Chavanel. This was the first project undertaken by Noemie for Zodiac and she is delighted with news of the award.

Tim Fleming who is the General Manager of Zodiac's Military and Professional Division came from the USA especially to be at Seawork where he commented,

"I am delighted with this award in recognition of innovation and design for Zodiac. Especially so, as the concept design of the MINUTEMAN was a first project for one of our young female design engineers."

Below are some technical details and photos of the MINUTEMAN with RAPID ACCESS DOOR.



The Minuteman with RAD is fully equipped



Zodiac's patent pending Rapid Access Door

Zodiac Minuteman 4.20 with Rapid Access Door: "Water rescue, not body recovery" !

Developed especially for First Responders, the Minuteman with Rapid Access Door enables First Responders to get a fully capable inflatable boat from packed to operational state in less than 60 seconds. It can be entirely inflated from a source of compressed air, requires no assembly and its unique patent pending Rapid Access Door makes it the ideal boat for diving or SAR (Search and Rescue) missions.



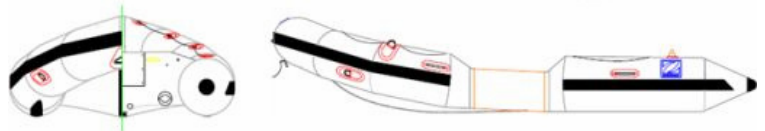
The MINUTEMAN with RAPID ACCESS DOOR can be launched easily and quickly to help prevent drowning in any body of water and has a rich list of standard equipment to aid First responders in their 24/7 task of rescuing victims from water related accidents.

Capacity

- . maximum number of persons (ISO6185) : 5
- . maximum payload including engine and fuels (ISO6185) : 650 kg
- . buoyancy tube volume : 1400 l

Dimensions

- . overall length : 4.20 m
- . inside length : 3.00 m
- . overall width : 1.83 m
- . inside width : 0.92 m
- . weight empty : 67 kg
- . folded dimensions : (bag 1) 1.4x0.7x0.35 m3



Zodiac MINUTEMAN with RAPID ACCESS DOOR - standard equipment:

- . Rapid Access Door (RAD) & flap
- . fast inflation kit with manifold for scuba tank inflation
- . reflective tape all around on handles, and underneath the bottom
- . removable waterproof bag for accessories
- . 30 meters rescue throw bag
- . righting lines with storage pouch
- . positioning light



**For more information on Zodiac MilPro products, check our website:
www.zodiacmilpro.com**