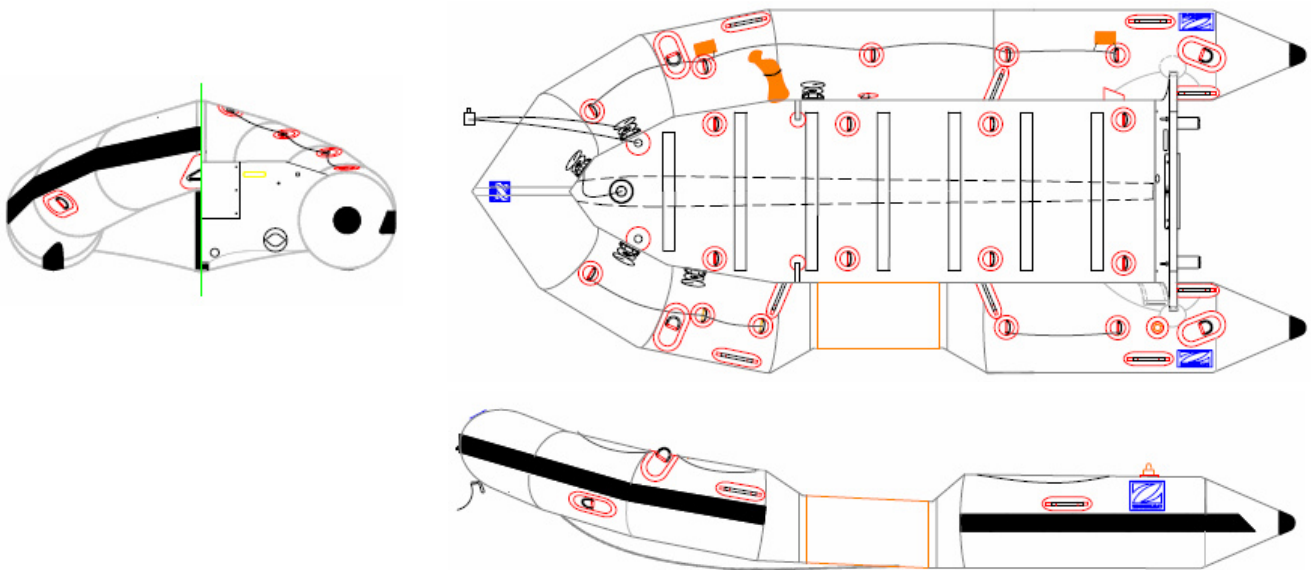




**Zodiac MINUTEMAN with Rapid Access Door
4.20 m hypalon neoprene**

P/N Z80129
Rev 0 – 10 Mar 06
TECHNICAL DATA SHEET



HELP PREVENT DROWNINGS

Developed especially for First Responders, the Minuteman series, as the name implies, enables First Responders to get a fully capable inflatable boat from pack to operational state in less than 60 seconds.

The minuteman can be inflated from a source of compressed air and requires no assembly thanks to its Duratane™ PU high pressure inflatable deck. Either using paddles or a motor up to 30hp, the 67kg Minuteman can be launched easily and quickly to help prevent drownings in any body of water. His unique patented Rapid Access Door and accessories make it the ideal boat for diving or SAR (Search and Rescue) missions.

The overall appearances of the watercraft depicted in this document are trademarks of Zodiac

THIS MATERIAL CONTAINS PROPRIETARY DATA BELONGING TO ZODIAC INTERNATIONAL UNAUTHORIZED DISCLOSURE, USE OR REPRODUCTION WILL RESULT IN LIABILITY. ZODIAC RESERVES THE RIGHT TO CHANGE THE SPECIFICATIONS OF THIS TECHNICAL DATA SHEET WITHOUT NOTICE.

Dimensions and weight + or - 3 % (5% on prototype)

page 1 / 4



ZODIAC INTERNATIONAL

DIVISION MARINE

MINUTEMAN with Rapid Access Door - BOAT DEFINITION



CAPACITY

- . maximum number of persons (ISO6185) : 5
- . maximum payload including engine and fuels (ISO6185) : 650 kg
- . buoyancy tube volume : 1400 l

DIMENSIONS

- . overall length : 4.20 m
- . inside length : 3.00 m
- . overall width : 1.83 m
- . inside width : 0.92 m
- . weight empty : 67 kg
- . buoyancy tube diameter : 0.455 m
- . folded dimensions : bag 1 1.4x0.7x0.35 m3

SAFETY / INFLATION

- . number of airtight compartments on main buoyancy tube : 3
- . inflatable keel : 1
- . inflation pressure (tube and keel): 0.24 bar
- . high pressure inflatable floor : 1
- . Inflation pressure (floor): 0.8 bar

ENGINE POWER

- . shaft length : long (20")
- . recommended power : 25 HP
- . maximum power : 30 HP
- . maximum engine weight : 75 kg

THIS MATERIAL CONTAINS PROPRIETARY DATA BELONGING TO ZODIAC INTERNATIONAL UNAUTHORIZED DISCLOSURE, USE OR REPRODUCTION WILL RESULT IN LIABILITY. ZODIAC RESERVES THE RIGHT TO CHANGE THE SPECIFICATIONS OF THIS TECHNICAL DATA SHEET WITHOUT NOTICE.

Dimensions and weight + or - 3 % (5% on prototype)

page 2 / 4



Zodiac Minuteman 4.20 m hypalon neoprene

FABRIC

- . buoyancy tubes : grey ,1100 dtx, polyester, hypalon neoprene
- . bottom : grey ,1100 dtx, polyester, hypalon neoprene
- . keel : black , 940 dtx, polyamide, hypalon neoprene
- . Rapid Access Door : orange , 1880 dtx , polyamide, hypalon neoprene
- . Rapid Access flap : black , 940 dtx , polyamide, hypalon neoprene

TRANSOM BLACK VARNISHED MARINE PLYWOOD

- . self-bailers, large flow, with scuppers : 2
- . aluminum engine mounting plate : 1
- . engine transom pad (marine plywood) black : 1

BUOYANCY TUBE

- . Rapid Access Door 1
- . Rapid Access flap 1

FLOOR

- . high pressure inflatable floor : 1
- . Duratane™ protection sleeve, orange : 1
- . anti-slip stripes : 7
- . tie down D-rings : 8

VALVES

- . buoyancy tube intercommunication / inflation valves : 2
- . fast inflation points on buoyancy tube w. quick disconnect: 1
- . overpressure valve on buoyancy tube : 1
- . fast inflation point on h2p floor w. quick disconnect: 1
- . overpressure valve on h2p floor : 1
- . intercommunication hose from main tube to keel, w. quick disconnect : 1

REINFORCEMENTS

- . teardrop rubbing strake, black : 1
- . transom ovoid reinforcement : 1100 dtx
- . flat rubbing strakes underneath keel : 1
- . flat rubbing strakes underneath tubes : 2 + 2
- . transom stainless steel bottom shoe : 1

THIS MATERIAL CONTAINS PROPRIETARY DATA BELONGING TO ZODIAC INTERNATIONAL UNAUTHORIZED DISCLOSURE, USE OR REPRODUCTION WILL RESULT IN LIABILITY. ZODIAC RESERVES THE RIGHT TO CHANGE THE SPECIFICATIONS OF THIS TECHNICAL DATA SHEET WITHOUT NOTICE.

Dimensions and weight + or - 3 % (5% on prototype)

page 3 / 4



Zodiac Minuteman 4.20 m hypalon neoprene

HANDLING & TOWING

. exterior lifeline, laced on D-rings :	Each side
. pilot grab handles, webbing on red fabric base :	1 + 1
. carrying handles, webbing on red fabric base (facing outside):	2 + 2
. carrying handles, webbing on red fabric base (facing inside):	1 + 1
. bow handle (plated brass with black coating), on red fabric base :	1
. bow large lifting & mooring D rings (black on red fabric base) :	2
. aft lifting points, eye bolts on transom :	2
. bow large towing D ring (black on red fabric base) :	2
. aft large towing & mooring D rings (black on red fabric base) :	2

OTHER EQUIPMENT

. fast inflation kit with manifold for scuba :	1
. reflective tape all around on handles, and underneath the bottom :	yes
. foot bellows + hose :	1
. repair kit with pressure indicator :	1
. paddles, varnished wood:	2
. removable waterproof bag for accessories :	1
. boat bag :	1
. 30 meters rescue throw bag :	1
. righting lines with storage pouch :	2
. sign posting light :	1

NB :

- no lacing cuff, the buoyancy tube is slick
- no cylinder sheath on the floor, the cylinder remains in the truck to save interior space and weight. The fast inflation kit has quick disconnectors.



THIS MATERIAL CONTAINS PROPRIETARY DATA BELONGING TO ZODIAC INTERNATIONAL UNAUTHORIZED DISCLOSURE, USE OR REPRODUCTION WILL RESULT IN LIABILITY. ZODIAC RESERVES THE RIGHT TO CHANGE THE SPECIFICATIONS OF THIS TECHNICAL DATA SHEET WITHOUT NOTICE.

Dimensions and weight + or - 3 % (5% on prototype)

page 4 / 4