



ZODIAC INTERNATIONAL

DIVISION MARINE

MARK IV HEAVY DUTY RibPack

Rev 1 – 16 Jan 2004
TECHNICAL DATA SHEET



MK 3 GR Cruz Roja RibPack w/ stand up console and bolster



When compared to a similar sized average priced rigid inflatable boat (RIB), the Zodiac RibPack (patent pending) offers the professional user lower operating costs, larger carrying capacity and economical storage and transport costs. Purchase prices are similar or lower to an average Rib and usually the cost of the motor is lower too.

These have proven to be of interest to operators of commercial boats.

The RibPack offers most everything that a Rib will offer but the added advantage of being dismantled in less than 15 minutes without tools which makes storage and transport a snap. These boats can often be launched from shores where a road trailer cannot access and a number of dismantled RibPack craft can be flown or driven in a helicopter or van. This is due to the repositioning of accessories and outboard engine using a quick release system that does not require tools.

RibPack boats are light and have easily driven hull shapes that require minimum horsepower. Due to their immense inherent buoyancy, they can carry loads far greater than rigid boats or conventional Ribs. Their inflatable structure is very resilient to impacts and sharp objects. The RibPack can be a valuable asset to any operators fleet of workboats

The overall appearances of the watercraft depicted in this document are trademarks of Zodiac

THIS MATERIAL CONTAINS PROPRIETARY DATA BELONGING TO ZODIAC INTERNATIONAL .UNAUTHORIZED DISCLOSURE, USE OR REPRODUCTION WILL RESULT IN LIABILITY. ZODIAC RESERVES THE RIGHT TO CHANGE THE SPECIFICATIONS OF THIS TECHNICAL DATA SHEET WITHOUT NOTICE.

Dimensions and weight + or - 3 % (5% on prototype)

page 1 / 8



ZODIAC INTERNATIONAL

DIVISION MARINE

MK IV HD SPECIFICATIONS (NO ACCESSORIES)

CAPACITY

. maximum number of persons (ISO6185) :	12	12
. maximum payload including engine and fuels (ISO6185) :	1720 kg	3792 lbs
. floorboard usable area :	3.585 m ²	38.57 sq ft
. buoyancy tube volume :	2500 l	88 cu ft

DIMENSIONS

. overall length :	5.30 m	17' 5"
. inside length :	3.70 m	12' 2"
. overall width :	2.14 m	7'
. inside width :	1.04 m	3' 5"
. weight empty (boat only) :	150 kg	331 lbs
. buoyancy tube diameter :	0.55 m	1'10"
. folded dimensions (boat only) :	sac 1	1.55x0.75x0.42
	bag 1	5'1"x2'6"x1'5"
	sac 2	1.35x0.67x0.25
	bag 2	4'5"x2'2"x0'10"

SAFETY / INFLATION

. number of airtight compartments on main buoyancy tube :	5
. intercommunicating, inflation valves :	4
. inflatable keel :	1
. lower tubes :	2

ENGINE POWER

. shaft length :	L	20"
. recommended power :	45 kW	60 HP
. maximum power :	60 kW	80 HP
. maximum power with 2 engines :	2 x 30 KW	2 x 40 HP
. maximum engine weight :	140 Kg	308 lbs
. maximum weight with 2 engines :	2 x 95 Kg	2 x209lbs

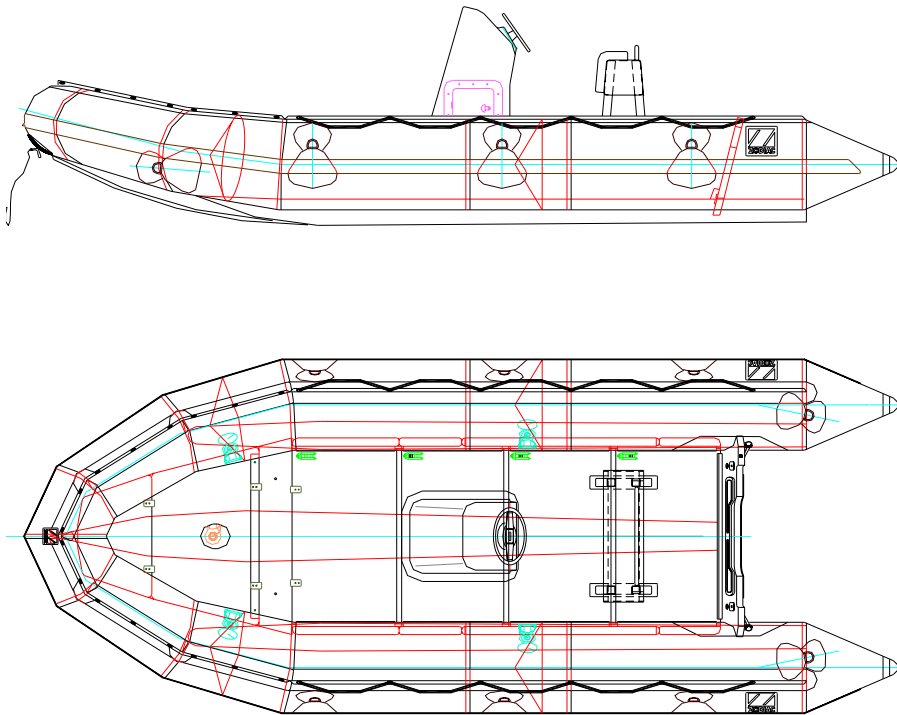
THIS MATERIAL CONTAINS PROPRIETARY DATA BELONGING TO ZODIAC INTERNATIONAL .UNAUTHORIZED DISCLOSURE, USE OR REPRODUCTION WILL RESULT IN LIABILITY. ZODIAC RESERVES THE RIGHT TO CHANGE THE SPECIFICATIONS OF THIS TECHNICAL DATA SHEET WITHOUT NOTICE.

Dimensions and weight + or - 3 % (5% on prototype)

page 2 / 8



MK 4 HD RibPack - configuration 1



- | | |
|--------------------------------------------------------|--------|
| - MK 4 HD Z80139 : | 1 |
| - steering console, grey, Z1124: | 1 |
| - bolster, grey, Z66003 : | 1 |
| - quick connexion system for jockey seat and console : | 2 sets |
| - engine quick release shoe: | 1 set |

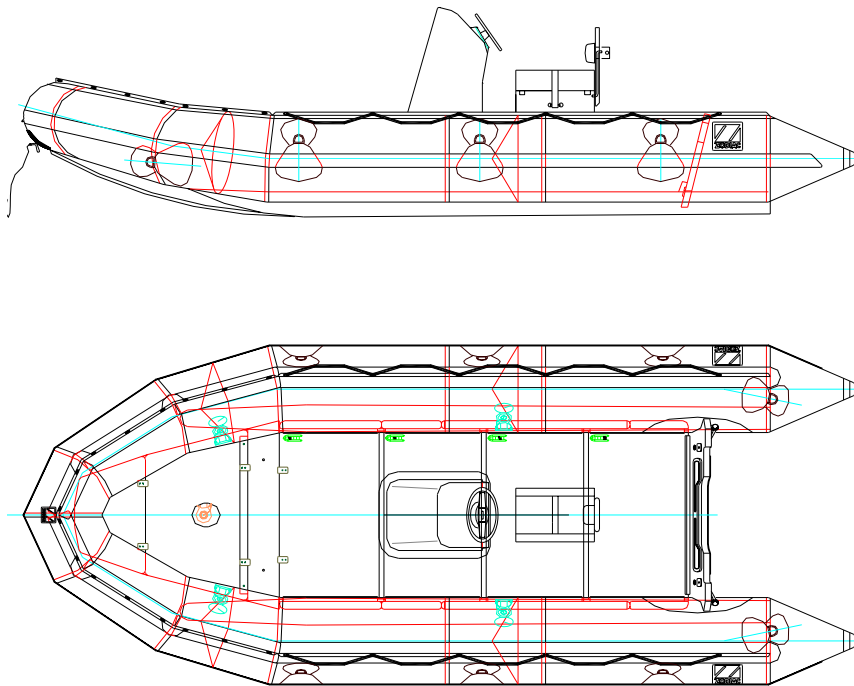
THIS MATERIAL CONTAINS PROPRIETARY DATA BELONGING TO ZODIAC INTERNATIONAL .UNAUTHORIZED DISCLOSURE, USE OR REPRODUCTION WILL RESULT IN LIABILITY. ZODIAC RESERVES THE RIGHT TO CHANGE THE SPECIFICATIONS OF THIS TECHNICAL DATA SHEET WITHOUT NOTICE.

Dimensions and weight + or - 3 % (5% on prototype)

page 3 / 8



MK 4 HD RibPack - configuration 2



- MK 4 HD Z80139 : 1
- steering console, grey, Z1124: 1
- jockey seat, grey, Z1922 : 1
- quick connexion system for jockey seat and console : 2 sets
- engine quick release shoe: 1 set

- option, jockey seat with integrated fuel tank Z66000

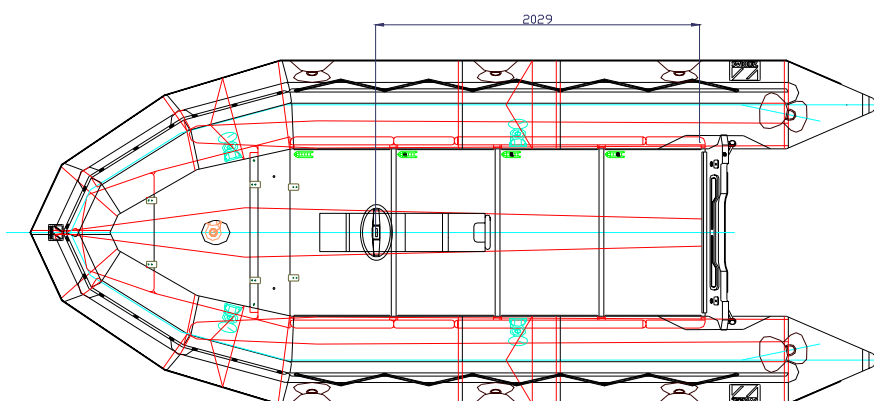
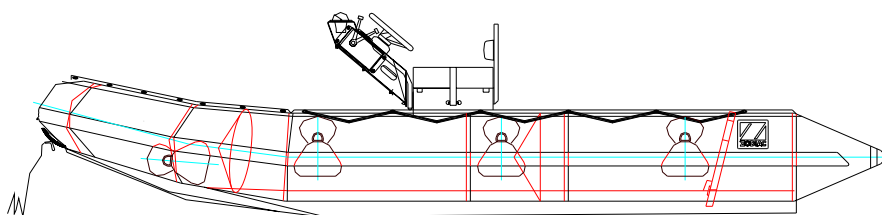
THIS MATERIAL CONTAINS PROPRIETARY DATA BELONGING TO ZODIAC INTERNATIONAL .UNAUTHORIZED DISCLOSURE, USE OR REPRODUCTION WILL RESULT IN LIABILITY. ZODIAC RESERVES THE RIGHT TO CHANGE THE SPECIFICATIONS OF THIS TECHNICAL DATA SHEET WITHOUT NOTICE.

Dimensions and weight + or - 3 % (5% on prototype)

page 4 / 8



MK 4 HD RibPack - configuration 3



- MK 4 HD Z80139 : 1
- steering box small Z66028 + Z65062 : 1
- jockey seat, grey, Z1922 : 1
- quick connexion system for jockey seat : 1 set
- engine quick release shoe : 1 set

- option, jockey seat with integrated fuel tank Z66000

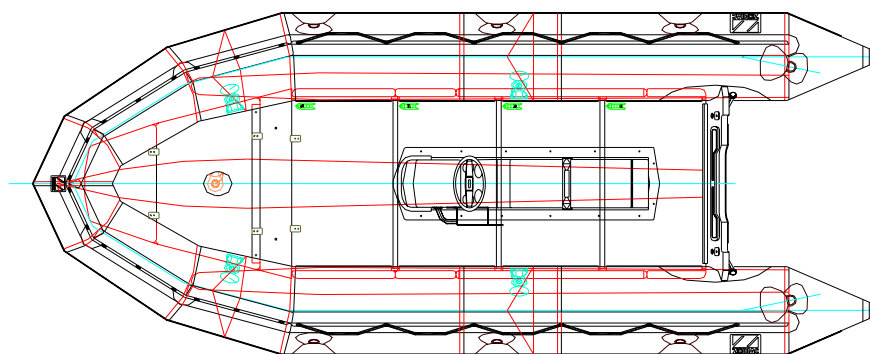
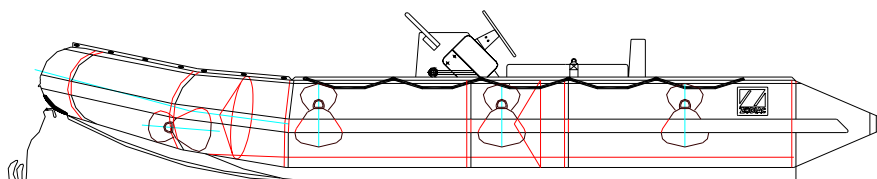
THIS MATERIAL CONTAINS PROPRIETARY DATA BELONGING TO ZODIAC INTERNATIONAL .UNAUTHORIZED DISCLOSURE, USE OR REPRODUCTION WILL RESULT IN LIABILITY. ZODIAC RESERVES THE RIGHT TO CHANGE THE SPECIFICATIONS OF THIS TECHNICAL DATA SHEET WITHOUT NOTICE.

Dimensions and weight + or - 3 % (5% on prototype)

page 5 / 8



MK 4 HD RibPack - configuration 4



- | | |
|--------------------------------------------|-------|
| - MK 4 HD Z80139 : | 1 |
| - jockey console 2 persons, grey, Z66014 : | 1 |
| - quick connexion system for jockey seat : | 1 set |
| - engine quick release shoe: | 1 set |

THIS MATERIAL CONTAINS PROPRIETARY DATA BELONGING TO ZODIAC INTERNATIONAL .UNAUTHORIZED DISCLOSURE, USE OR REPRODUCTION WILL RESULT IN LIABILITY. ZODIAC RESERVES THE RIGHT TO CHANGE THE SPECIFICATIONS OF THIS TECHNICAL DATA SHEET WITHOUT NOTICE.

Dimensions and weight + or - 3 % (5% on prototype)

page 6 / 8



STANDARD EQUIPMENT

FABRIC

. buoyancy tubes :	black , 1670 dtx, polyester, hypalon neoprene
. speed tubes :	black , 940 dtx, polyamid, hypalon neoprene
. bottom :	black , 940 dtx, polyamid, hypalon neoprene
. keel :	black, 940 dtx, polyamid, hypalon neoprene

TRANSOM MARINE PLYWOOD

. self-bailer :	4
. aluminium engine mounting plate :	1
. engine transom pad (marine plywood) :	1
. transom triangular deflector :	2
. transom bottom stainless steel protection shoe :	1
. transom filler for twin engine installation :	1

FLOORBOARD

. anti-skid floorboard (anodised aluminium) :	4 parts
. bow floorboard marine plywood :	2
. stringers, wood profile :	2
. fixed bow thrustboard :	1

VALVES

. buoyancy tube intercommunication / inflation valves :	4
. keel inflation valve :	1
. inflation valves on hoses to speed tubes :	2

REINFORCEMENTS

. teardrop peripheric rubbing strake :	1
. large transom ovoid reinforcement :	1670 dtx (PY)
. rubbing strake bow triangular profile :	1
. rubbing strake underneath lower tubes :	1 + 1

THIS MATERIAL CONTAINS PROPRIETARY DATA BELONGING TO ZODIAC INTERNATIONAL . UNAUTHORIZED DISCLOSURE, USE OR REPRODUCTION WILL RESULT IN LIABILITY. ZODIAC RESERVES THE RIGHT TO CHANGE THE SPECIFICATIONS OF THIS TECHNICAL DATA SHEET WITHOUT NOTICE.

Dimensions and weight + or - 3 % (5% on prototype)

page 7 / 8



STANDARD EQUIPMENT (continue)

HANDLING

- . lateral large lifting D rings (stainless steel with black coating) : 6
- . bow handle (nickel brass) with black coating : 1
- . exterior lifeline : all around

TOWING

- . bow large towing D rings (stainless steel with black coating) : 2
- . stern large towing D rings (stainless steel with black coating) : 2

OTHER EQUIPMENT

- . foot bellows + hose : 2
- . repair kit with pressure indicator : 1
- . paddles with brackets : 2
- . towing V : 1
- . floorboard bag : 1
- . boat storage bag : 1

The Heavy Duty is a unique range of larger inflatables that is designed primarily to carry heavy loads at planing speeds due to its patented Futura hull shape. HD uses heavy materials and is reinforced throughout making it suitable for extreme service. Even at sizes up to 7 m, they can still be rolled up into a bag and thrown into the back of a pickup truck or aircraft.

THIS MATERIAL CONTAINS PROPRIETARY DATA BELONGING TO ZODIAC INTERNATIONAL . UNAUTHORIZED DISCLOSURE, USE OR REPRODUCTION WILL RESULT IN LIABILITY. ZODIAC RESERVES THE RIGHT TO CHANGE THE SPECIFICATIONS OF THIS TECHNICAL DATA SHEET WITHOUT NOTICE.

Dimensions and weight + or - 3 % (5% on prototype)

page 8 / 8