



# ZODIAC INTERNATIONAL

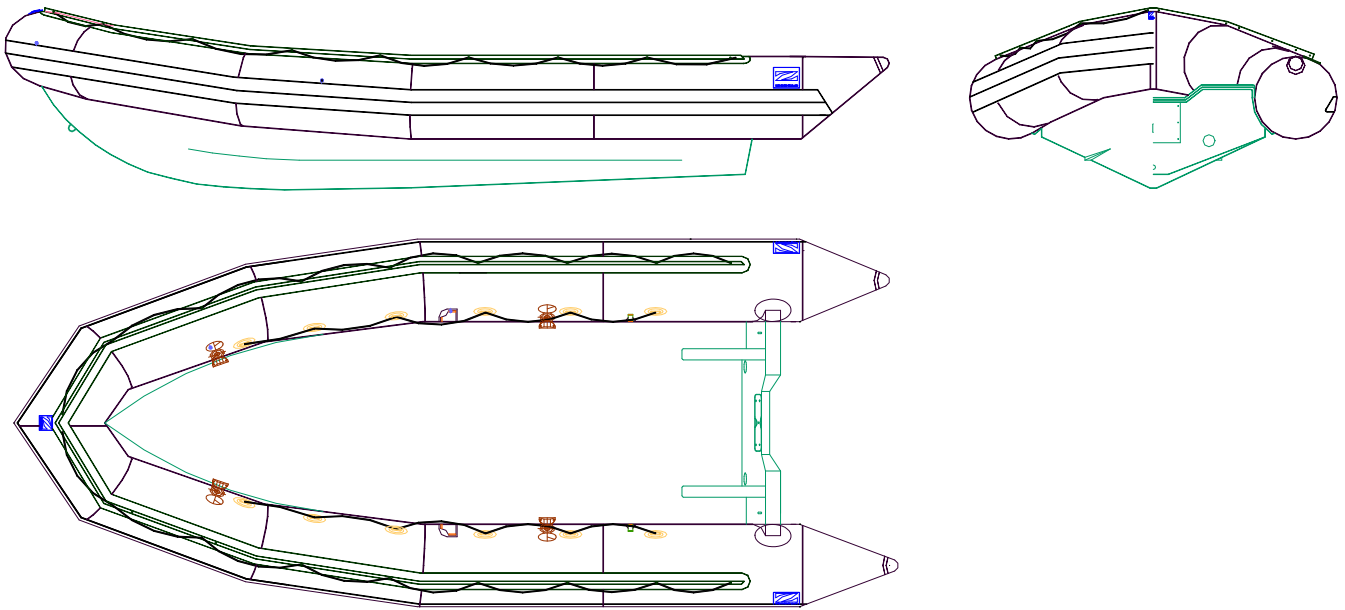
DIVISION MARINE

## SEA RIB MARINE & NAVY

### ZODIAC 600 SRMN

P/N Z80369

Rev 1 – 21 May 07  
TECHNICAL DATA SHEET



***Evolved from a long line of Navy RIB***

Zodiac's SRMN were originally built for Military use so their hulls are reinforced to take the maximum G forces that are applied when fully laden and powered at maximum speed.

These Sea Ribs are simple, functional and tough. The collar is a heavy-duty neoprene hypalon with Zodiac's special intercommunicating valves. The total deck area is open and reinforced allowing installation anywhere of our wide range of steering consoles, bolsters and other equipment.

Available as an "off the shelf" product and maintained in stock at warehouses and selected dealers.

The 600 SRMN P/N Z80369 is available on stock.

**Important Note:** Boats available in North America may have different specifications.

The overall appearances of the watercraft depicted in this document are trademarks of Zodiac

THIS MATERIAL CONTAINS PROPRIETARY DATA BELONGING TO ZODIAC INTERNATIONAL. UNAUTHORIZED DISCLOSURE, USE OR REPRODUCTION WILL RESULT IN LIABILITY. ZODIAC RESERVES THE RIGHT TO CHANGE THE SPECIFICATIONS OF THIS TECHNICAL DATA SHEET WITHOUT NOTICE.

Dimensions and weight + or - 3 % (5% on prototype)

page 1 / 3



# ZODIAC INTERNATIONAL

DIVISION MARINE

## 600 SRMN BOAT DEFINITION

### CAPACITY

. maximum number of persons (ISO6185) :	16	16
. maximum payload including engine and fuels (ISO6185) :	1660 kg	3660 lbs
. floorboard usable area :	4.8 m <sup>2</sup>	51.67 sq ft
. buoyancy volume :	2750 l	97 cu. ft.

### DIMENSIONS

. overall length :	5.90 m	19'4"
. inside length :	4.47 m	14'8"
. overall width :	2.45 m	8"
. inside width :	1.35 m	4'05"
. weight empty :	370 kg	814 lb
. buoyancy tube diameter :	0.55 m	1'10"
. hull storage dimensions :	5.10x1.70x0.95 16'9"x5'7"x3'1"	

### SAFETY / INFLATION

. number of airtight compartments :	5	5
. inflation pressure :	0.24 bar	3.4 P.S.I.
. intercommunication / inflation valves :	4	4
. design category (EC 94/25) :	C	

### ENGINE POWER

. shaft length :	L	20"
. recommended power :	90 kW	120 HP
. maximum power :	112 kW	150 HP
. maximum engine weight :	198 kg	436 lbs
. maximum power with 2 engines (1) :	2 x 52 KW	2 x 70 HP
. maximum weight with 2 engines (1) :	2 x125 kg	2 x275 lbs

(1) need optional twin engine bracket P/N Z66031

THIS MATERIAL CONTAINS PROPRIETARY DATA BELONGING TO ZODIAC INTERNATIONAL. UNAUTHORIZED DISCLOSURE, USE OR REPRODUCTION WILL RESULT IN LIABILITY. ZODIAC RESERVES THE RIGHT TO CHANGE THE SPECIFICATIONS OF THIS TECHNICAL DATA SHEET WITHOUT NOTICE.

Dimensions and weight + or - 3 % (5% on prototype)

page 2 / 3



# ZODIAC INTERNATIONAL

DIVISION MARINE

## BUOYANCY TUBE- (GLUED ON)

### BUOYANCY TUBE - CONSTRUCTION

- . buoyancy tubes : navy grey , 1 880 dtx, polyamid, hypalon neoprene
- . intercommunication and inflation valves (delrin cap): 4
- . all around rubbing strake, flat profile, black : 2

### HANDLING

- . bow carrying handle (plated brass, black) : 1
- . exterior lifeline, on lacing cuff : 1 all around
- . interior lifeline 1 + 1

## HULL (NAVY GREY)

### HULL CONSTRUCTION

- . glass reinforced plastic, with grey gel-coat : yes
- . deck with all surface reinforcements : yes
- . hull drain : 1
- . buoyancy foam, closed cells : 160 l

### TRANSOM

- . self-bailers, large flow, w/ scuppers : 2
- . engine transom pad (plywood) : 1
- . engine aluminium mounting plate : 1
- . trim tabs, GRP, bolted on transom : 1
- . crossleg reinforcements : 2

### LIFTING & TOWING

- . bow towing rings on hull, stainless steel U-bolts : 2
- . transom towing rings, stainless steel U-bolts : 2
- . bow lifting rings on hull, stainless steel folding padeyes : 2
- . transom lifting rings, stainless steel U-bolts : 2
- . bow mooring eye, stainless steel U-bolt : 1

## ACCESSORIES

- . foot pump : 1
- . repair kit : 1
- . paddles (aluminium shaft, plastic blade) with support : 4

THIS MATERIAL CONTAINS PROPRIETARY DATA BELONGING TO ZODIAC INTERNATIONAL. UNAUTHORIZED DISCLOSURE, USE OR REPRODUCTION WILL RESULT IN LIABILITY. ZODIAC RESERVES THE RIGHT TO CHANGE THE SPECIFICATIONS OF THIS TECHNICAL DATA SHEET WITHOUT NOTICE.

Dimensions and weight + or - 3 % (5% on prototype)

page 3 / 3