

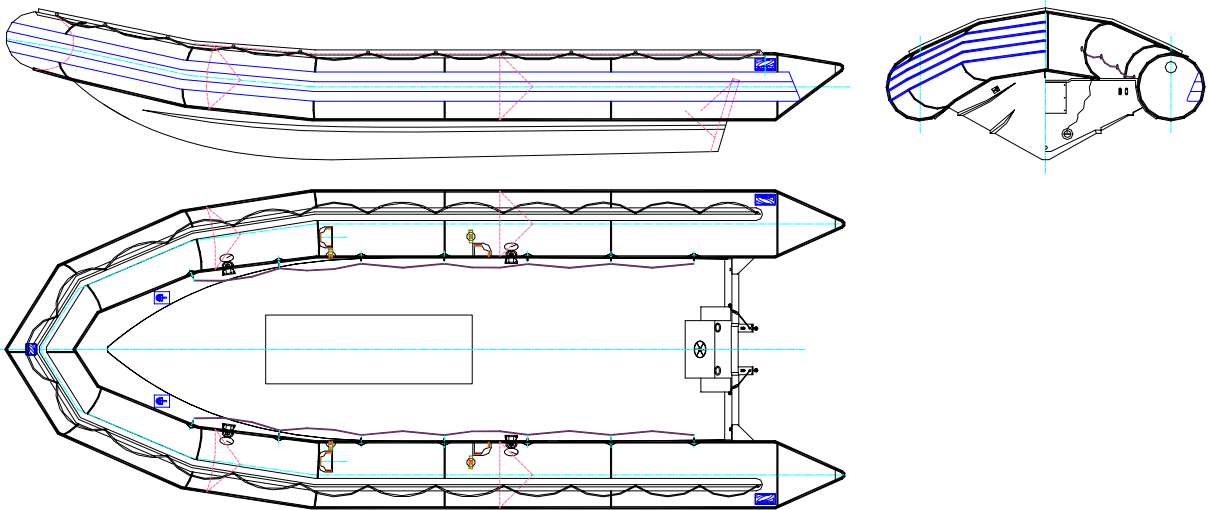


SEA RIB MARINE & NAVY

**ZODIAC 730 SRMN**

P/N Z80372

Rev 0 – 3 Oct 06  
TECHNICAL DATA SHEET



***Evolved from a long line of Navy RIB***

Zodiac's SRMN were originally built for Military use so their hulls are reinforced to take the maximum G forces that are applied when fully laden and powered at maximum speed.

These Sea Ribs are simple, functional and tough. The collar is a heavy-duty neoprene hypalon with Zodiac's special intercommunicating valves. The total deck area is open and reinforced allowing installation anywhere of our wide range of steering consoles, bolsters and other equipment.

Available as an "off the shelf" product and maintained in stock at warehouses and selected dealers.

**The 730 SRMN P/N Z80372 is available on stock.**

The overall appearances of the watercraft depicted in this document are trademarks of Zodiac

THIS MATERIAL CONTAINS PROPRIETARY DATA BELONGING TO ZODIAC INTERNATIONAL. UNAUTHORIZED DISCLOSURE, USE OR REPRODUCTION WILL RESULT IN LIABILITY. ZODIAC RESERVES THE RIGHT TO CHANGE THE SPECIFICATIONS OF THIS TECHNICAL DATA SHEET WITHOUT NOTICE.

Dimensions and weight + or - 3 % (5% on prototype)

page 4 / 4



# ZODIAC INTERNATIONAL

DIVISION MARINE

## 730 SRMN BOAT DEFINITION

### CAPACITY

. maximum number of persons (ISO6185) :	22	22
. maximum payload including engine and fuels (ISO6185) :	2100 kg	4630 lbs
. floorboard usable area :	7.9 m <sup>2</sup>	85.03 sq ft
. buoyancy volume :	3790 l	133.8 cu ft

### DIMENSIONS

. overall length :	7.30 m	24'
. inside length :	5.90 m	19'4"
. overall width :	2.70 m	8'10"
. inside width :	1.55 m	5'1"
. weight empty :	680 kg	1498 lbs
. buoyancy tube diameter :	0.57 m	1'11"
. hull storage dimensions :	6.20x2.00x0.96 20'4"x6'4"x3'2"	

### SAFETY / INFLATION

. number of airtight compartments :	5	5
. inflation pressure :	0.24 bar	3.4 P.S.I.
. intercommunication / inflation valves :	4	4
. design category (EC 94/25) :	C	

### ENGINE POWER

. shaft length (single) :	XL	25"
. recommended power :	131 kW	175 HP
. maximum power :	150 kW	200 HP
. maximum engine weight :	270 KG	596 lbs
. maximum power with 2 engines (long shaft – 20") :	2 x 75 KW	2x 100 HP
. maximum weight with 2 engines :	2 x 175 KG	2x 386 lbs

THIS MATERIAL CONTAINS PROPRIETARY DATA BELONGING TO ZODIAC INTERNATIONAL. UNAUTHORIZED DISCLOSURE, USE OR REPRODUCTION WILL RESULT IN LIABILITY. ZODIAC RESERVES THE RIGHT TO CHANGE THE SPECIFICATIONS OF THIS TECHNICAL DATA SHEET WITHOUT NOTICE.

Dimensions and weight + or - 3 % (5% on prototype)

page 4 / 4



# ZODIAC INTERNATIONAL

DIVISION MARINE

## BUOYANCY TUBE – (GLUED ON)

### BUOYANCY TUBE- CONSTRUCTION

- . fabric : navy grey, 1 880 dtx, polyamid, hypalon neoprene
- . intercommunication and inflation valves (delrin cap): 4
- . all around rubbing strake, flat profile, black : 3 rows

### HANDLING

- . exterior lifeline, on lacing cuff : 1 all around
- . internal lifeline : 1 + 1

## HULL (NAVY GREY)

### HULL CONSTRUCTION

- . glass reinforced plastic, with grey gel-coat : yes
- . deck with all surface reinforcements : yes
- . hull drain : 1
- . buoyancy foam, closed cells : 320 l
- . integrated fuel tank : 200 l
- . bilge pump : 1
- . option for bellow-deck cable routing : yes

### TRANSOM

- . self-bailers, large flow, w/ scuppers : 2
- . engine transom pad (plywood) : 1
- . crossleg reinforcements : 2

### LIFTING & TOWING

- . bow towing rings on hull, stainless steel U-bolts : 2
- . transom towing rings, stainless steel U-bolts : 2
- . bow lifting rings on hull, stainless steel folding padeyes : 2
- . transom lifting rings, stainless steel U-bolts : 2
- . bow mooring eye, stainless steel U-bolt : 1

## ACCESSORIES

- . foot pump : 2
- . repair kit : 1
- . paddles (aluminium shaft, plastic blade) with support : 4
- . boat hook : 1

THIS MATERIAL CONTAINS PROPRIETARY DATA BELONGING TO ZODIAC INTERNATIONAL. UNAUTHORIZED DISCLOSURE, USE OR REPRODUCTION WILL RESULT IN LIABILITY. ZODIAC RESERVES THE RIGHT TO CHANGE THE SPECIFICATIONS OF THIS TECHNICAL DATA SHEET WITHOUT NOTICE.

Dimensions and weight + or - 3 % (5% on prototype)

page 4 / 4