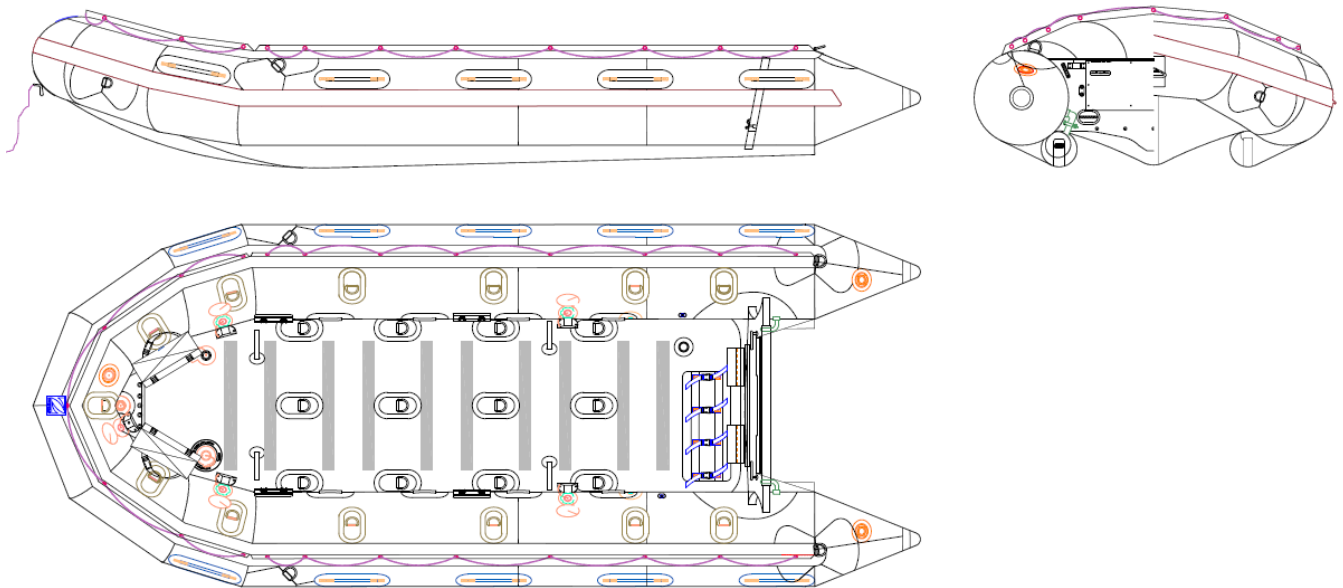




ZODIAC F470 EVO7 - Black

P/N Z80229

Rev 2 – 29 Oct 07
TECHNICAL DATA SHEET



Well known throughout the world as the definitive Special Forces boat, the FC range, and specially the FC 470 is used by more elite soldiers and sailors than any other craft worldwide. It is the only craft of its type that has actually been used in combat in different theatres of operations and comes through with flying colours. This is a result of its unique patented hull shape and various floor systems that allows it to carry combatants in a variety of missions. The hull shape is especially important as it can plane large loaded as well as give the driver unsurpassed manoeuvrability in different and often dangerous conditions.

The FC 470 Evol 7 is the latest development of FC 470 generation. It features a new high pressure inflatable floor reinforced by a Duratane™ sleeve that makes the boat lighter, more comfortable, and usable with a 55 hp engine. Its hull shape has also been slightly modified to optimize its performances.

THIS MATERIAL CONTAINS PROPRIETARY DATA BELONGING TO ZODIAC INTERNATIONAL UNAUTHORIZED DISCLOSURE, USE OR REPRODUCTION WILL RESULT IN LIABILITY. ZODIAC RESERVES THE RIGHT TO CHANGE THE SPECIFICATIONS OF THIS TECHNICAL DATA SHEET WITHOUT NOTICE.

Dimensions and weight + or - 3 % (5% on prototype)

page 1 / 6



ZODIAC INTERNATIONAL

DIVISION MARINE

Numerous improvements have been made since the previous generation of FC 470, showing the commitment of our engineering team in consistently upgrading our models. All those changes are made to make your life easier, better and safer.



Easier:

Easier to assemble with the new modified HPP 70 mm integral floor. You'll never believe how much quicker you will be on the water.

Easier to inflate. The boat is 100% inflatable from a single point.

Easier to maintain with the new speed tube system. You can now replace the lower tube in and out very easily with our cord and eyelet system. The wooden bow thrustboard has also been removed.

THIS MATERIAL CONTAINS PROPRIETARY DATA BELONGING TO ZODIAC INTERNATIONAL UNAUTHORIZED DISCLOSURE, USE OR REPRODUCTION WILL RESULT IN LIABILITY. ZODIAC RESERVES THE RIGHT TO CHANGE THE SPECIFICATIONS OF THIS TECHNICAL DATA SHEET WITHOUT NOTICE.

Dimensions and weight + or - 3 % (5% on prototype)

page 2 / 6



Better:

Lighter: The boat is about 30kg / 66lbs lighter with its H2P floor.

Better performance with the new speed tubes and new hull design. The lower tubes have been slightly enlarged and the hull redesigned to make a deeper Vee hull.

Better range of engine power. With the new H2P high pressure inflatable floor, the max engine power goes up to 55 HP.

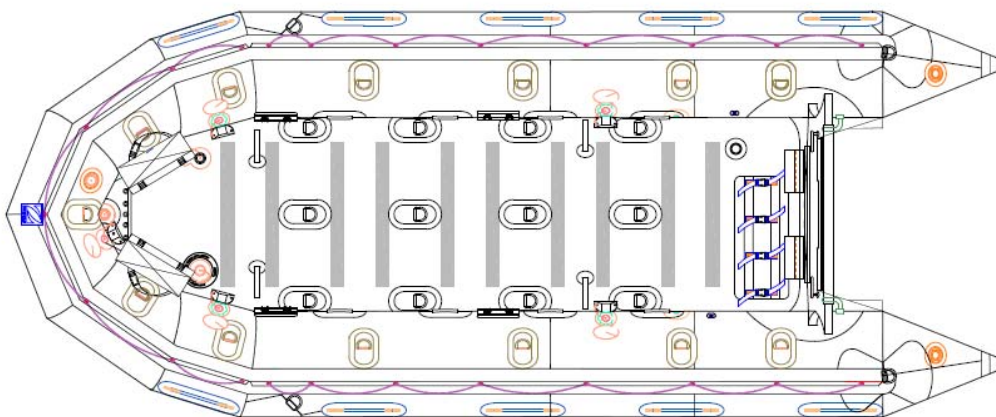
Better Comfort thanks to new floor. The H2P is a highly shock mitigating floor.

Better longitudinal rigidity thanks to the combined increase in operational pressure (now 950 mbar / 13.77 PSI) and thickness (now 67mm / 2.67 inch) of the new floor compared to a conventional H2P floor.

Safer:

Safer with the high puncture resistance Duratane™ protection sleeve on the inflatable H2P floor.

Safer with the larger transom bailers providing a higher water outflow.



THIS MATERIAL CONTAINS PROPRIETARY DATA BELONGING TO ZODIAC INTERNATIONAL UNAUTHORIZED DISCLOSURE, USE OR REPRODUCTION WILL RESULT IN LIABILITY. ZODIAC RESERVES THE RIGHT TO CHANGE THE SPECIFICATIONS OF THIS TECHNICAL DATA SHEET WITHOUT NOTICE.

Dimensions and weight + or - 3 % (5% on prototype)

page 3 / 6



ZODIAC INTERNATIONAL

DIVISION MARINE

F470 Evol 7 Black - BOAT DEFINITION

CAPACITY

. maximum number of persons :	10	10
. maximum payload including engine and fuels :	1250 kg	2756 lb
. floorboard usable area :	3 m ²	32.3 sq ft
. buoyancy tube volume :	1885 l	(67 cu ft)

DIMENSIONS

. overall length :	4.70 m	15' 5"
. inside length :	3.40 m	11' 2"
. overall width :	1.90 m	6' 3"
. inside width :	0.90 m	2'11"
. weight empty with H2P floor:	122 kg	269 lb
. weight empty with optional hard floor:	150 kg	330 lb
. buoyancy tube diameter :	0.50 m	1'8"
. folded dimensions :	sac 1 bag 1	0.75x1.50 m 2'6"x4'11"

SAFETY / INFLATION

. number of airtight compartments on main buoyancy tube :	5	
. inflatable keel ; removable :	1	
. lower tubes ; removable :	2	
. inflatable floor :	1	
. total airtight chambers:	9	
. buoyancy tubes working pressure :	240 mbar	3.5 psi
. inflatable floor working pressure :	950 mbar	13 psi

ENGINE POWER

. shaft length :	long	20"	
. recommended power :	29.9 kW	40 HP	
. maximum power :	with H2P floor	40.7 kW	55 HP
. maximum weight of engine :	with H2P floor	125 KG	275 lbs
. maximum power :	with roll-up floor	29.9 kW	40 HP
. maximum weight of engine :	with roll-up floor	110 kg	242 lbs
. maximum power :	with 3 sections hard deck	45 kW	60 HP
. maximum weight of engine :	with 3 sections hard deck	125 KG	275 lbs
. maximum power :	with 2 engines & hard deck	2 x 22 KW	2 x 30 HP
. maximum engine weights :	with 2 engines & hard deck	2 x 75 KG	2x165 lbs

THIS MATERIAL CONTAINS PROPRIETARY DATA BELONGING TO ZODIAC INTERNATIONAL UNAUTHORIZED DISCLOSURE, USE OR REPRODUCTION WILL RESULT IN LIABILITY. ZODIAC RESERVES THE RIGHT TO CHANGE THE SPECIFICATIONS OF THIS TECHNICAL DATA SHEET WITHOUT NOTICE.

Dimensions and weight + or - 3 % (5% on prototype)

page 4 / 6



ZODIAC INTERNATIONAL

DIVISION MARINE

F470 Evol 7 black - BOAT DEFINITION

FABRIC

- . buoyancy tubes : black , 1670 dtx, polyester, hypalon neoprene
- . speed tubes : black , 940 dtx, polyamide, hypalon neoprene
- . bottom & keel: black , 940 dtx, polyamide, hypalon neoprene

TRANSOM BLACK

- . self-bailers, extra-large flow w/scupper trunks : 2
- . self bailer, large flow, sock type : 1
- . aluminium engine mounting plate, twin engine : 1
- . transom sacrificial plate : 1
- . transom batten, aluminium (quick shift from h2p to hard deck) : 1
- . top of transom aluminium protection, black : 1

FLOOR

- . integral high pressure inflatable floor, 70 mm thick : 1
- . high puncture resistance (Duratane™) sleeve, black : 1

VALVES

- . buoyancy tube intercommunication / inflation valves : 4
- . connecting hoses from main tube to speed tubes, w/ clamps : 2
- . connecting hose from main tube to keel, w/ quick disconnect : 1
- . SCUBA inflating points on main buoyancy tube : 2
- . overpressure valves on main buoyancy tube* : 2
- . SCUBA inflating point on high pressure floor : 1
- . overpressure valve on high pressure floor : 1
- . deflation valve on high pressure floor : 1
- . recessed deflating valves in cones : 2
- . nose valve (for optional Venturi deflation) : 1

*overpressure valves moved away from coxswain's back

REINFORCEMENTS

- . peripheric rubbing strake, black : 1
- . flat rubbing strake underneath keel, black : 1
- . flat rubbing strake underneath lower tubes, black : 1 + 1
- . anti splash triangles, black : 2
- . transom bottom stainless steel protection shoe : 1
- . double ovoid reinforcements on tube for transom attachment : 2 + 2
- . reinforcement extrusion aft of lower tubes : 1 + 1

THIS MATERIAL CONTAINS PROPRIETARY DATA BELONGING TO ZODIAC INTERNATIONAL UNAUTHORIZED DISCLOSURE, USE OR REPRODUCTION WILL RESULT IN LIABILITY. ZODIAC RESERVES THE RIGHT TO CHANGE THE SPECIFICATIONS OF THIS TECHNICAL DATA SHEET WITHOUT NOTICE.

Dimensions and weight + or - 3 % (5% on prototype)

page 5 / 6



F470 Evol 7 Black - BOAT DEFINITION

HANDLING

- . extra large "gorilla" carrying handles, webbing on hyp / néo patch : 5 + 5
- . bow carrying handle (plated brass w/ black coating) : 1
- . exterior lifeline (peripheral), black : 1
- . interior handles, webbing on hyp / néo patch, black : 4 + 4
- . interior bow handles, webbing on hyp / néo patch, black : 1 + 1
- . interior large tie down D rings (stainless steel w/ black coating) : 13 all around MBT
- . interior large tie down D rings (stainless steel w/ black coating) : 4 + 4 + 4 on H2P floor

TOWING & LIFTING

- . bow large towing D rings, reinforced (cress w/ black coating) : 1 + 1
- . aft large towing D rings, reinforced (cress w/ black coating) : 1 + 1
- . bow large lifting D rings, reinforced (cress w/ black coating) : 1 + 1
- . transom lifting points (U-bolts, cress) : 1 + 1

OTHER EQUIPMENT

- . foot bellows + hoses : 2
- . repair kit with Go No-go pressure gauge (Z6741, no glue) : 1
- . paddles : 6
- . paddle sleeves, fabric flaps with buckles : 2 sets
- . cylinder sleeve, on inflatable floor, with buckles, black : 1
- . bow document pouches ; removable : 2
- . boat carrying bag, black : 1
- . floorboard carrying bag, black : 1

OPTIONS NOT INCLUDED IN STANDARD

- . 3 sections rigid aluminium floorboards black, with stringers: Z66051
- . aluminium slatted roll-up floor
- . fast inflation kit (no cylinder) : Z66050
- . scuba diving cylinder for fast inflation : Z3188

THIS MATERIAL CONTAINS PROPRIETARY DATA BELONGING TO ZODIAC INTERNATIONAL UNAUTHORIZED DISCLOSURE, USE OR REPRODUCTION WILL RESULT IN LIABILITY. ZODIAC RESERVES THE RIGHT TO CHANGE THE SPECIFICATIONS OF THIS TECHNICAL DATA SHEET WITHOUT NOTICE.

Dimensions and weight + or - 3 % (5% on prototype)

page 6 / 6