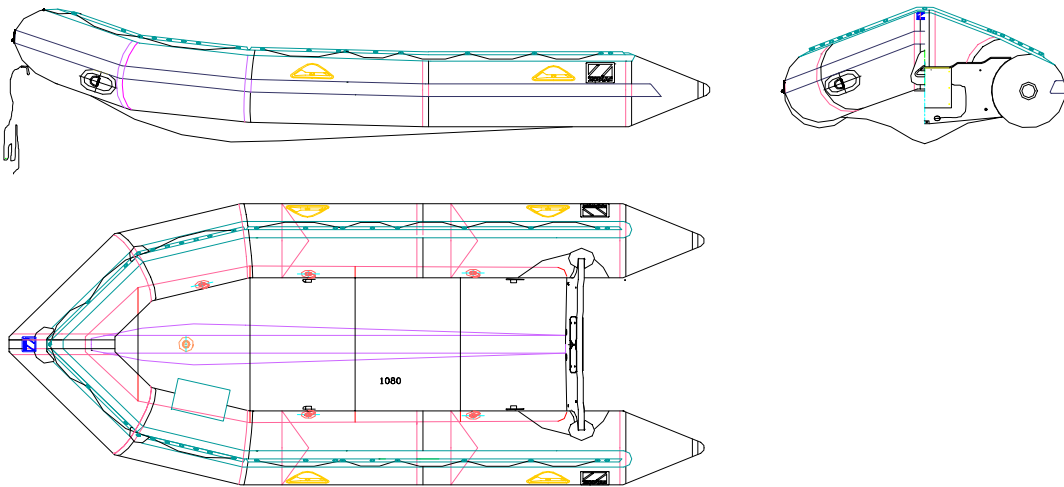




ZODIAC MK 3 GR MOI

P/N Z80132

Rev 0 – 30 Aug 06
TECHNICAL DATA SHEET



Simple, strong and reliable

The Grand Raid name is almost as old as Zodiac itself and has gone through many design and feature evolutions to still be very relevant in today's market.

GR's form the backbone of many small boat fleets and are pretty much unique in its full equipment definition.

They continue to answer the needs of users worldwide.

The MK 3 GR MOI P/N Z80132 is available on special order.

The overall appearances of the watercraft depicted in this document are trademarks of Zodiac

THIS MATERIAL CONTAINS PROPRIETARY DATA BELONGING TO ZODIAC INTERNATIONAL . UNAUTHORIZED DISCLOSURE, USE OR REPRODUCTION WILL RESULT IN LIABILITY. ZODIAC RESERVES THE RIGHT TO CHANGE THE SPECIFICATIONS OF THIS TECHNICAL DATA SHEET WITHOUT NOTICE.

Dimensions and weight + or - 3 % (5% on prototype)

page 1 / 3



ZODIAC INTERNATIONAL

DIVISION MARINE

MK 3 GR MOI - BOAT DEFINITION

CAPACITY

. maximum number of persons (ISO6185) :	8	8
. maximum payload including engine and fuel (ISO6185) :	1270 kg	2800 lb
. floorboard usable area :	2.502 m ²	26.93 sq ft
. buoyancy tube volume :	1850 l	65.33 cu ft

DIMENSIONS

. overall length :	4.70 m	15'5"
. inside length :	3.05 m	10'
. overall width :	1.90 m	6'3"
. inside width :	0.90 m	2'11"
. weight empty :	120 kg	264 lb
. buoyancy tube diameter :	0.50 m	1'8"
. folded dimensions :	sac 1	1.45x0.75x0.52
	bag 1	4'9"x2'6"x1'8"
	sac 2	1.05x0.77x0.18
	bag 2	3'5"x2'6"x0'7"

SAFETY / INFLATION

. number of airtight compartments on main buoyancy tube :	5	5
. inflatable keel :	1	1
. inflation pressure :	0.24 bar	3.4 psi

ENGINE POWER

. shaft length :	short	15"
. recommended power :	38 kW	50 HP
. maximum power :	49 kW	65 HP
. maximum engine weight :	110 Kg	243 lbs

FABRIC

. buoyancy tubes :	black , 1880 dtx, polyamid, hypalon neoprene
. bottom :	black, 1880 dtx, polyamid, hypalon neoprene
. keel :	black, 1880 dtx, polyamid, hypalon neoprene

THIS MATERIAL CONTAINS PROPRIETARY DATA BELONGING TO ZODIAC INTERNATIONAL . UNAUTHORIZED DISCLOSURE, USE OR REPRODUCTION WILL RESULT IN LIABILITY. ZODIAC RESERVES THE RIGHT TO CHANGE THE SPECIFICATIONS OF THIS TECHNICAL DATA SHEET WITHOUT NOTICE.

Dimensions and weight + or - 3 % (5% on prototype)

page 2 / 3



ZODIAC INTERNATIONAL

DIVISION MARINE

TRANSOM BLACK VARNISHED MARINE PLYWOOD

. self-bailer :	2
. aluminum engine mounting plate :	1
. engine transom pad (marine plywood) black :	1

FLOORBOARD

. 3 sections rigid floorboard (anodized aluminum) :	3 parts
. bow floorboard (marine plywood) :	2
. stringers, anodized aluminum :	2

VALVES

. buoyancy tube inflation valves, delrin on plated brass bases :	5
. keel inflation valve, delrin on plated brass base :	1

REINFORCEMENTS

. all-around rubbing strake, black :	1
. large transom ovoid reinforcement :	1 + 1
. rubbing strakes underneath keel :	1
. rubbing strakes underneath tubes :	2 + 2
. transom stainless steel protection shoe :	1

HANDLING

. carrying handles, molded PVC, black :	2 + 2
. bow handle (nickel brass with black coating), with mooring line :	1
. exterior lifeline :	all around

TOWING

. bow large towing D ring (stainless steel with black coating) :	2
--	---

OTHER EQUIPMENT

. foot bellows + hose :	1
. repair kit with pressure indicator :	1
. paddles :	2
. Bow document pouch :	1
. storage bag :	2
. fuel tank fastener on floorboards :	1 pair

THIS MATERIAL CONTAINS PROPRIETARY DATA BELONGING TO ZODIAC INTERNATIONAL . UNAUTHORIZED DISCLOSURE, USE OR REPRODUCTION WILL RESULT IN LIABILITY. ZODIAC RESERVES THE RIGHT TO CHANGE THE SPECIFICATIONS OF THIS TECHNICAL DATA SHEET WITHOUT NOTICE.

Dimensions and weight + or - 3 % (5% on prototype)

page 3 / 3