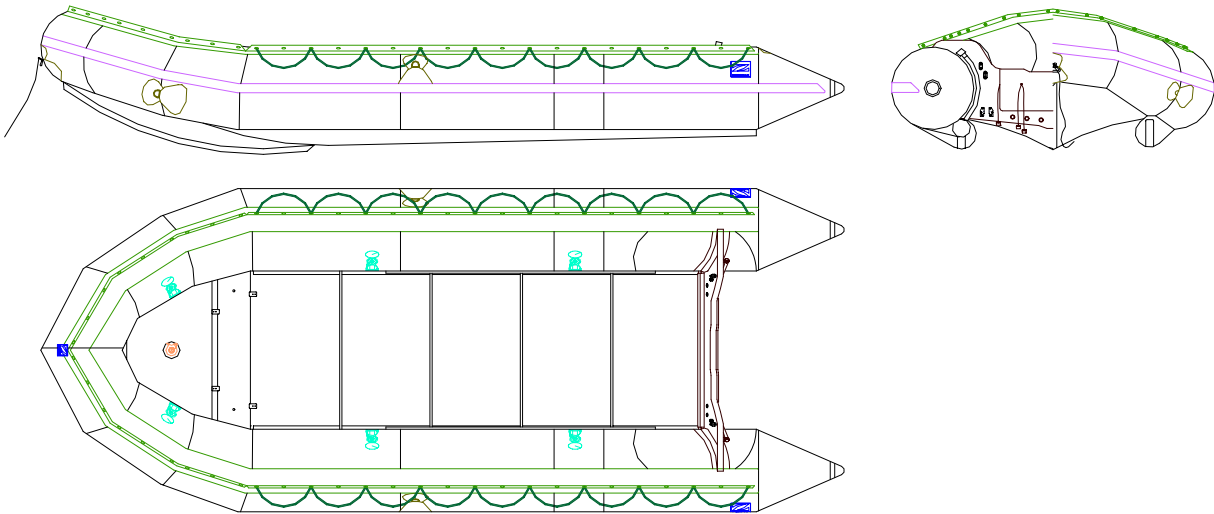




ZODIAC MARK VI HEAVY DUTY

P/N Z80142

Rev 1 – 3 April 07
TECHNICAL DATA SHEET



Large and voluminous but can still pack down into bags

This is a unique range of larger inflatables that is designed primarily to carry heavy loads at planing speeds due to its patented Futura hull shape. HD uses heavy materials and is reinforced throughout making it suitable for extreme service.

Even at sizes up to 7 m, they can still be rolled up into a bag and thrown into the back of a pickup truck or aircraft.

The MK 6 HD P/N Z80142 is available on stock.

The overall appearances of the watercraft depicted in this document are trademarks of Zodiac

THIS MATERIAL CONTAINS PROPRIETARY DATA BELONGING TO ZODIAC INTERNATIONAL. UNAUTHORIZED DISCLOSURE, USE OR REPRODUCTION WILL RESULT IN LIABILITY. ZODIAC RESERVES THE RIGHT TO CHANGE THE SPECIFICATIONS OF THIS TECHNICAL DATA SHEET WITHOUT NOTICE.

Dimensions and weight + or - 3 % (5% on prototype)

page 1 / 4



ZODIAC INTERNATIONAL

DIVISION MARINE

MK VI HD BOAT DEFINITION

CAPACITY

. maximum number of persons (ISO6185) :	20	20
. maximum payload including engine and fuels (ISO6185) :	4100 kg	9040 lb
. floorboard usable area :	6.688 m ²	71.99 sq ft
. buoyancy tube volume :	5900 l	208 cu ft

DIMENSIONS

. overall length :	7.00 m	23'
. inside length :	5.10 m	16' 9"
. overall width :	2.88 m	9' 5"
. inside width :	1.40 m	4' 7"
. weight empty :	320 kg	705 lb
. buoyancy tube diameter :	0.74 m	2'5"
. folded dimensions :	sac 1	2.50x1.00x0.50
	bag 1	8'2"x3'3"x1'8"
	sac 2	1.70x0.90x0.30
	bag 2	5'7"x2'11"x1'

SAFETY / INFLATION

. number of airtight compartments on main buoyancy tube :	7
. intercommunicating, inflation valves :	6
. inflatable keel :	1
. lower tubes :	2
. design category (EC 94/25) :	C

ENGINE POWER

. shaft length :	L	20"
. recommended power :	86 kW	115 HP
. maximum power :	131 kW	175 HP
. maximum power with 2 engines :	2 x 52 kW	2 x70 HP
. maximum engine weight :	240 Kg	529 lbs
. maximum weight with 2 engines :	2 x125 Kg	2 x 275lbs

THIS MATERIAL CONTAINS PROPRIETARY DATA BELONGING TO ZODIAC INTERNATIONAL. UNAUTHORIZED DISCLOSURE, USE OR REPRODUCTION WILL RESULT IN LIABILITY. ZODIAC RESERVES THE RIGHT TO CHANGE THE SPECIFICATIONS OF THIS TECHNICAL DATA SHEET WITHOUT NOTICE.

Dimensions and weight + or - 3 % (5% on prototype)

page 2 / 4



STANDARD EQUIPMENT

FABRIC

. buoyancy tubes :	black , 1670 dtx, polyester, hypalon neoprene
. speed tubes :	black , 1880 dtx, polyamid, hypalon neoprene
. bottom :	black , 1880 dtx, polyamid, hypalon neoprene
. keel :	black , 940 dtx, polyamid, hypalon neoprene

TRANSOM MARINE PLYWOOD

. self-bailer :	4
. engine transom pad (marine plywood) :	1
. transom triangular deflector :	2
. transom bottom stainless steel protection shoe :	1

FLOORBOARD

. anti-skid floorboard (anodised aluminium) :	5 parts
. bow floorboard marine plywood :	2
. stringers anodised aluminium :	4
. fixed bow thrustboard, marine plywood :	1

VALVES

. buoyancy tube intercommunication / inflation valves (delrin cap):	6
. keel inflation valve (delrin):	1
. inflation valves on hoses to speed tubes (delrin):	2

REINFORCEMENTS

. all around rubbing strake, flat profile, black :	1
. large transom ovoid reinforcement :	1670 dtx (PY)
. rubbing strake bow triangular profile :	1
. rubbing strake underneath lower tubes :	1 + 1

THIS MATERIAL CONTAINS PROPRIETARY DATA BELONGING TO ZODIAC INTERNATIONAL. UNAUTHORIZED DISCLOSURE, USE OR REPRODUCTION WILL RESULT IN LIABILITY. ZODIAC RESERVES THE RIGHT TO CHANGE THE SPECIFICATIONS OF THIS TECHNICAL DATA SHEET WITHOUT NOTICE.

Dimensions and weight + or - 3 % (5% on prototype)

page 3 / 4



ZODIAC INTERNATIONAL

DIVISION MARINE

HANDLING

. lateral large lifting D rings (stainless steel with black coating) :	2
. bow lifting rings (stainless steel folding padeyes on thrustboard) :	2
. aft lifting rings (stainless steel U-bolts on transom)	2
. bow handle (plated brass) with black coating :	1
. exterior lifeline :	all around

TOWING

. aft towing rings, (stainless steel U bolts on transom) :	2
. bow large towing D-rings on tube (stainless steel with black coating)	2

OTHER EQUIPMENT

. foot bellows + hose :	2
. repair kit with pressure indicator :	1
. paddles (aluminum shaft, plastic blade) :	2
. floorboard bag :	1
. boat bag :	1

THIS MATERIAL CONTAINS PROPRIETARY DATA BELONGING TO ZODIAC INTERNATIONAL. UNAUTHORIZED DISCLOSURE, USE OR REPRODUCTION WILL RESULT IN LIABILITY. ZODIAC RESERVES THE RIGHT TO CHANGE THE SPECIFICATIONS OF THIS TECHNICAL DATA SHEET WITHOUT NOTICE.

Dimensions and weight + or - 3 % (5% on prototype)

page 4 / 4