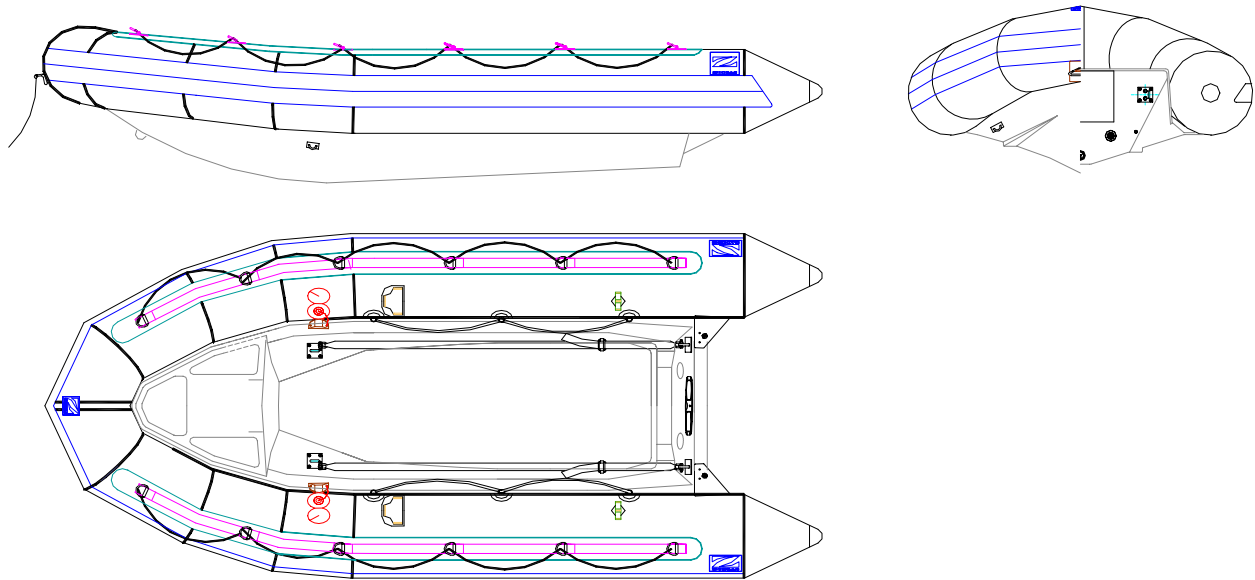




ZODIAC INTERNATIONAL

DIVISION MARINE

<u>SEA RIB</u> ZODIAC SRR 420	P/N Z80360 Rev 0 – 3 Oct 06 TECHNICAL DATA SHEET
--	--



The Zodiac SRR 420 derive from the SRMN but with smaller dimensions, and have also been known for their professional and military use.

They are reinforced to take the maximum G-forces when fully laden and powered at maximum speed.

These semi rigid boats are simple, functional and tough. The buoyancy tube is made of a heavy duty hypalon neoprene fabric, and is removable for easier maintenance.

The SRR 420 are equipped with zodiac special intercommunication valves. Their hull is reinforced and permits installation of optional accessories.

The overall appearances of the watercraft depicted in this document are trademarks of Zodiac

THIS MATERIAL CONTAINS PROPRIETARY DATA BELONGING TO ZODIAC INTERNATIONAL. UNAUTHORIZED DISCLOSURE, USE OR REPRODUCTION WILL RESULT IN LIABILITY. ZODIAC RESERVES THE RIGHT TO CHANGE THE SPECIFICATIONS OF THIS TECHNICAL DATA SHEET WITHOUT NOTICE.

Dimensions and weight + or - 3 % (5% on prototype)

page 1/ 3



ZODIAC INTERNATIONAL

DIVISION MARINE

DEFINITION

CAPACITY

. maximum number of persons (ISO6185) :	6
. maximum payload including engine and fuel (ISO6185) :	750 kg
. floorboard usable area :	2.02 m ²
. buoyancy volume :	1323 l

DIMENSIONS

. overall length :	4.20 m
. inside length :	2.98 m
. overall width :	1.85 m
. inside width :	0.95 m
. weight empty :	220 kg
. buoyancy tube diameter :	0.45 m
. hull dimensions :	3.55x1.25x0.60

SECURITY / INFLATION

. number of airtight compartments on main buoyancy tube :	3
. inflation pressure :	0.24 bar
. intercommunication / inflation valves :	2
. design category (EC 94/25) :	C

ENGINE POWER

. shaft length :	L – 20”
. recommended power :	19 kW (25 cv)
. maximum power :	30 kW (40 cv)
. maximum engine weight :	95 KG

THIS MATERIAL CONTAINS PROPRIETARY DATA BELONGING TO ZODIAC INTERNATIONAL. UNAUTHORIZED DISCLOSURE, USE OR REPRODUCTION WILL RESULT IN LIABILITY. ZODIAC RESERVES THE RIGHT TO CHANGE THE SPECIFICATIONS OF THIS TECHNICAL DATA SHEET WITHOUT NOTICE.

Dimensions and weight + or - 3 % (5% on prototype)

page 2/ 3



ZODIAC INTERNATIONAL

DIVISION MARINE

BUOYANCY TUBE - (REMOVABLE)

. fabric, hypalon / neoprene navy grey, polyamide support :	1880 dtx
. intercommunication and inflation valves (delrin cap):	2
. all around rubbing strake, flat profile, black:	2

HANDLES

. bow carrying handle (marine brass):	1
. exterior lifeline laced on D rings :	1 + 1
. interior lifeline laced on D rings :	1 + 1

HULL – (NAVY GREY)

. deck, GRP, grey gel coat :	yes
. hull, GRP, grey gel coat :	yes
. hull drain :	1
. buoyancy foam, closed cells :	93 l

TRANSOM

. self bailer, large flow :	1
. engine transom pad (wood):	1
. engine mounting plate, aluminium, with security ring :	1
. cross legs reinforcements :	2

LIFTING AND TOWING

. bow towing rings on hull, stainless steel U-bolts :	2
. transom towing rings, stainless steel U-bolts :	2
. bow lifting rings on hull, stainless steel folding padeyes :	2
. transom lifting rings, stainless steel U-bolts :	2
. bow mooring eye, stainless steel U-bolts :	1

ACCESSOIRES

. foot pump :	1
. repair kit :	1
. paddles (aluminium shaft, plastic blade) with support :	2

THIS MATERIAL CONTAINS PROPRIETARY DATA BELONGING TO ZODIAC INTERNATIONAL. UNAUTHORIZED DISCLOSURE, USE OR REPRODUCTION WILL RESULT IN LIABILITY. ZODIAC RESERVES THE RIGHT TO CHANGE THE SPECIFICATIONS OF THIS TECHNICAL DATA SHEET WITHOUT NOTICE.

Dimensions and weight + or - 3 % (5% on prototype)

page 3/ 3