



ZODIAC HURRICANE TECHNOLOGIES, INC.

Professional Division

H662 OB LE



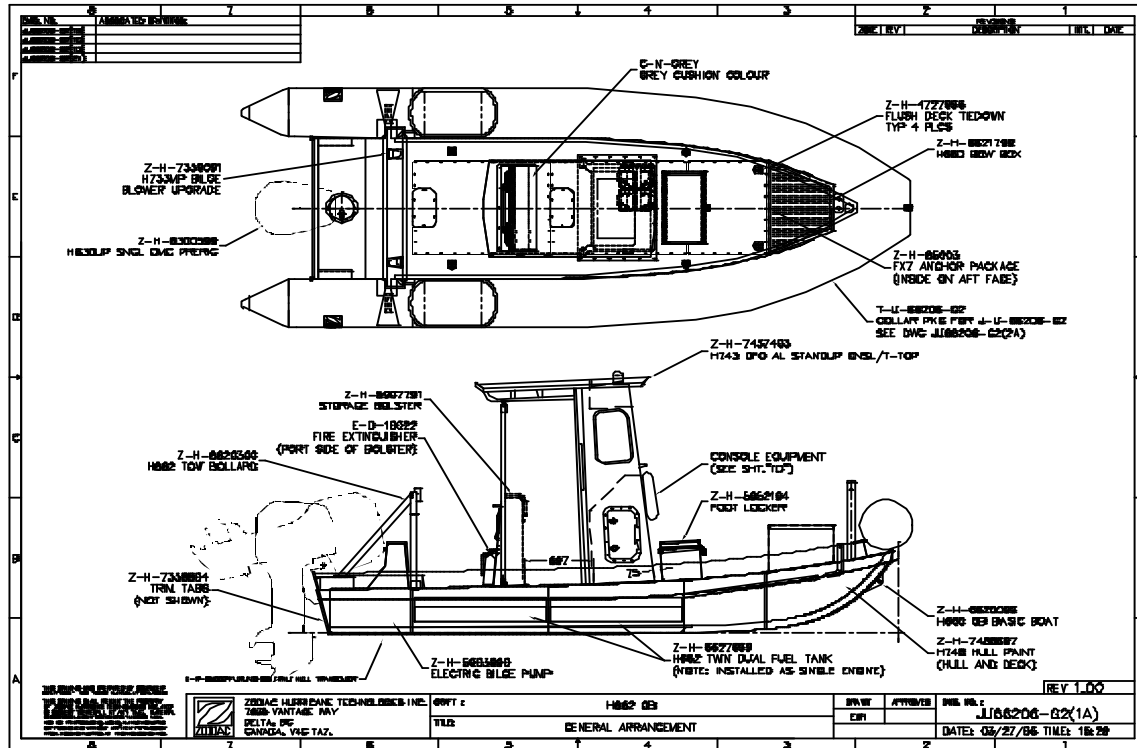
Considered the finest craft of their type in the world, the Zodiac Hurricane range of RIBS are mission specific and are used by the most knowledgeable and discriminating operators who demand the utmost in ruggedness and reliability. All Hurricane models have removable collars for ease of maintenance as well as the capability of interchanging with DuraRIB foam collars.

Zodiac Hurricane has been supplying high speed, outboard powered law enforcement RIBS since the 1970's.

The Zodiac Hurricane 662 OB LE is typically used by a one or two man crew for law enforcement, fisheries patrol and harbour security missions. The deep Vee aluminum hull and inflatable collar combined with the partially enclosed console provides the seaworthiness, crew protection, stability, and maneuverability required to operate reliably and effectively in a variety of maritime environments. The ruggedized hull and collar construction and highly responsive outboard motor propulsion system allows the Hurricane 662 to operate safely in heavy weather and alongside other craft during enforcement operations.



GENERAL SPECIFICATIONS



PHYSICAL CHARACTERISTICS:

- Length overall – 6.7 meters (22 ft.)
- Beam overall – 2.59 meters (8.5 ft.)
- Beam (collar deflated) – 1.89 meters (6.17 ft.)
- Collar diameter - 0.53 meters (21 in.)
- Collar volume – 2869 liters (101 cu. Ft.)
- Fuel capacity – 362 liters (96 US gal.)
- Displacement (with full fuel) – 1725 kg. (3800 lbs.)
- Max Speed – 40 Knots with 300 kg Payload, range 190 NM; Max HP 1 x 200 HP



H662 OB LE

FULL TURN-KEY OB LE BOAT DESCRIPTION (Includes Additional Upgrade Pkg.)

Hull and deck

- Aluminum hull with 5086 alloy
- Foam flotation (ISO6185)
- Hull paint
- *OPTIONS:* Hull color orange, grey, black or white; SKYDEX deck covering

Collar

- 5 chamber, 1670 dtx Neoprene/Hypalon inflatable tube with intercommunicating inflation/deflation valves and pressure relief valves
- Collar accessories – three Rubbing strakes (five with Upgrade Pkg.) and full length lifelines.
- *OPTIONS:* Colour available grey, black, white or orange; Auto inflate system, Durarib upgrade, Dive notches (port & starboard – only available with Durarib upgrade).

Console

- Aluminum standup console with T-top.
- *OPTIONS:* Colour available grey, black, white or orange; Sunbrella enclosure w/ vinyl side and back windows

Seating

- Leaning bolster with storage
- Foot locker (3.7 cubic feet) with cushioned seat

Equipment

- Stainless steel bow eye and two heavy-duty stainless steel transom tie-downs
- Mooring – two transom cleats, tow post and bow post.
- Under deck access hatch to aft hull cavity.
- 5 pound fire extinguisher and stowage
- Four (4) flush deck tie downs
- 7 cubic foot aluminum bow box

Bilge pumping/draining

- High capacity deck drains fitted w/ scupper trunks.
- Electric bilge pump.
- Bilge blower

Hoisting

- Integral SS hoisting fittings.

Electrical

- 12 VDC electrical system, 13 circuit (upgrade to 23 circuit)
- Two battery banks (Optima Starting & Dual purpose) with selector/isolator switch.
- Battery charger and battery condition indicator
- Dimmer switch (2) - instrument lights and separate dimmer for compass light.
- Handheld searchlight
- 2 Accessory plugs (marine and cigarette lighter style)
- Two pair of RED deck lights
- *OPTIONS:* RED or BLUE strobe light

Navigation/communications

- Navigation lights in accordance with COLREGS '72 for vessels > 20 meters length.
- Electric horn; Magnetic compass.
- Optional communications and navigation equipment on request.

Fuel system

- Rotomolded polyethylene fuel tanks – Two fuel tanks with a total of 96 US gallon (362 Litre) capacity, with fuel gauge and fuel/water separators.

Propulsion

- Single OBM pre-rig with controls and gauges.
- Hydraulic steering
- Single engine mounting with Pre-delivery Inspection and sea trial.

Shipping

- Shipping preparation (shrink wrapping)
-



H662 OB LE

- Shipping cradle

Additional Options Available

- Through Life Support based on operating hours, mission profile, location and operator profile; includes recommended maintenance schedule and spare parts and depot level maintenance
 - Post Delivery Orientation: commissioning, introductory vessel instruction, systems operation and recommended maintenance (maximum 6 attendees per session; one week minimum duration) held on location
-



H662 OB LE

The overall appearance of the H662 including all available Zodiac options is a protected trademark of Zodiac.

Disclaimer: Photos may vary with options
Descriptions/Specifications are subject to change
August 2005

For more information please contact your Zodiac dealer or visit our website.

