



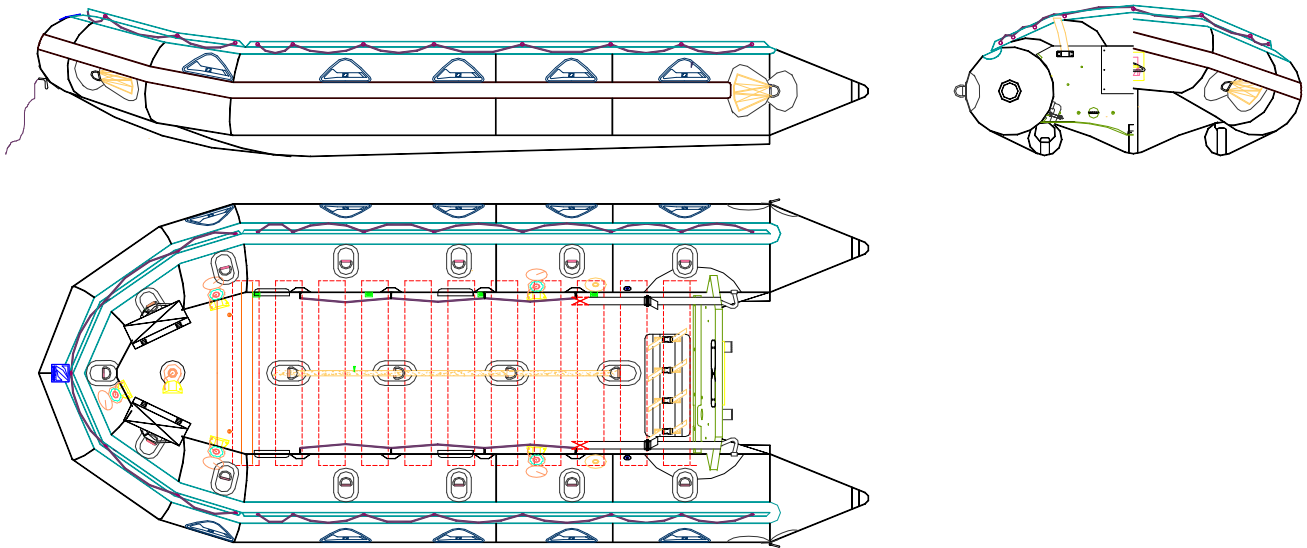
ZODIAC INTERNATIONAL

DIVISION MARINE

ZODIAC FC 470 FUTURA COMMANDO Long shaft - roll-up floor

P/N Z80222

Rev 1 – 3 April 07
TECHNICAL DATA SHEET



Battle tested

Well known throughout the world as the definitive Special Forces boat, the FC range, and specially the FC 470 is used by more elite soldiers and sailors than any other craft worldwide. It is the only craft of its type that has actually been used in combat in different theatres and comes thru with flying colors. This is a result of its unique patented hull shape and various floor systems that allows it to carry combatants in a variety of missions. The hull shape is especially important as it can get a large load on the plane as well as give the driver unsurpassed maneuverability in different and often dangerous conditions. Continually being updated for its ever-changing roles, the FC range is Zodiac's most recognizable military boat.

The FC 470 Long Shaft P/N Z80222 is available on stock

Important Note: Boats available in North America may have different specifications.

The overall appearances of the watercraft depicted in this document are trademarks of Zodiac

THIS MATERIAL CONTAINS PROPRIETARY DATA BELONGING TO ZODIAC INTERNATIONAL UNAUTHORIZED DISCLOSURE, USE OR REPRODUCTION WILL RESULT IN LIABILITY. ZODIAC RESERVES THE RIGHT TO CHANGE THE SPECIFICATIONS OF THIS TECHNICAL DATA SHEET WITHOUT NOTICE.

Dimensions and weight + or - 3 % (5% on prototype)

page 1 / 4



ZODIAC INTERNATIONAL

DIVISION MARINE

FC 470 FUTURA COMMANDO BOAT DEFINITION

CAPACITY

. maximum number of persons (ISO6185) :	10	10
. maximum payload including engine and fuels (ISO6185) :	1250 kg	2756 lb
. floorboard usable area :	2.95 m ²	31.74 sq ft
. buoyancy tube volume :	1860 l	66cu ft

DIMENSIONS

. overall length :	4.70 m	15' 5"
. inside length :	3.40 m	11' 2"
. overall width :	1.90 m	6' 3"
. inside width :	0.90 m	2'11"
. weight empty :	146 kg	322 lb
. buoyancy tube diameter :	0.50 m	1'8"
. folded dimensions :	sac 1	0.75x1.50
	bag 1	2'6"x4'11"

SAFETY / INFLATION

. number of airtight compartments on main buoyancy tube :	5
. intercommunication / inflation valve :	4
. inflatable keel :	1
. lower tubes :	2
. CO2 inflation points :	2
. overpressure valves :	2
. design category (EC 94/25) :	C

ENGINE POWER

. shaft length * :	Long	20"
. recommended power :	29.9 kW	40 HP
. maximum power :	29.9 kW	40 HP
. maximum weight of engine :	110 KG	243 lbs
. maximum power with 4 sections hard deck :	48.5 kW	65 HP
. maximum weight of engine w/hard deck :	127 KG	280 lbs
. maximum power with 2 engines & hard deck :	2 x 22 KW	2 x 30 HP
. maximum engine weights :	2 x 75 KG	2x209 lbs

* other models available for short shaft.

THIS MATERIAL CONTAINS PROPRIETARY DATA BELONGING TO ZODIAC INTERNATIONAL UNAUTHORIZED DISCLOSURE, USE OR REPRODUCTION WILL RESULT IN LIABILITY. ZODIAC RESERVES THE RIGHT TO CHANGE THE SPECIFICATIONS OF THIS TECHNICAL DATA SHEET WITHOUT NOTICE.

Dimensions and weight + or - 3 % (5% on prototype)

page 2 / 4



ZODIAC INTERNATIONAL

DIVISION MARINE

STANDARD EQUIPMENT

FABRIC

- . buoyancy tubes : black , 1880 dtx, polyamid, hypalon neoprene
- . speed tubes : black , 940 dtx, polyamid, hypalon neoprene
- . bottom : black , 940 dtx, polyamid, hypalon neoprene

TRANSOM BLACK

- . self-bailers, large flow w/scuppers : 2
- . engine mounting plate : 1
- . engine transom pad (marine plywood) : 1
- . tension straps transom / floorboard : 2

FLOORBOARD

- . roll up floor (aluminium slats) : 1
- . bow thrustboard, marine plywood : 1

VALVES

- . buoyancy tube intercommunication / inflation valves (delrin cap) : 4
- . keel inflation valve (delrin) : 1
- . CO2 inflating points : 2
- . overpressure valves : 2
- . connecting hoses from main tube to speed tubes : 2

REINFORCEMENTS

- . all around rubbing strake, flat profile, black : 1
- . flat rubbing strake underneath keel, black : 1
- . flat rubbing strake underneath lower tubes, black : 1 + 1
- . anti splash triangles : 2
- . transom bottom stainless steel protection shoe : 1
- . large transom/tubes ovoid reinforcements : 1880 dtx (PY)

THIS MATERIAL CONTAINS PROPRIETARY DATA BELONGING TO ZODIAC INTERNATIONAL UNAUTHORIZED DISCLOSURE, USE OR REPRODUCTION WILL RESULT IN LIABILITY. ZODIAC RESERVES THE RIGHT TO CHANGE THE SPECIFICATIONS OF THIS TECHNICAL DATA SHEET WITHOUT NOTICE.

Dimensions and weight + or - 3 % (5% on prototype)

page 3 / 4



ZODIAC INTERNATIONAL

DIVISION MARINE

HANDLING

. lateral carrying handles (molded) :	10
. bow carrying handle (plated brass w/ black coating) :	1
. exterior lifeline (peripheric) :	1
. interior lifeline :	2
. floorboard lifeline, laced on 4 D rings :	1
. interior large tie down D rings (stainless steel w/ black coating) :	13

TOWING & LIFTING

. bow large towing D rings (stainless steel w/ black coating) :	2
. stern large towing D rings (stainless steel w/ black coating) :	2
. transom lifting points :	2
. bow thrustboard-lifting points :	2
. towing V	1

OTHER EQUIPMENT

. foot bellows + hoses :	2
. repair kit with pressure indicator :	1
. paddles (aluminum shaft, plastic blade):	6
. Cylinder attachment sleeve on roll-up floor :	1
. document pouches, removable :	2
. boat carrying bag :	1

THIS MATERIAL CONTAINS PROPRIETARY DATA BELONGING TO ZODIAC INTERNATIONAL UNAUTHORIZED DISCLOSURE, USE OR REPRODUCTION WILL RESULT IN LIABILITY. ZODIAC RESERVES THE RIGHT TO CHANGE THE SPECIFICATIONS OF THIS TECHNICAL DATA SHEET WITHOUT NOTICE.

Dimensions and weight + or - 3 % (5% on prototype)

page 4 / 4