



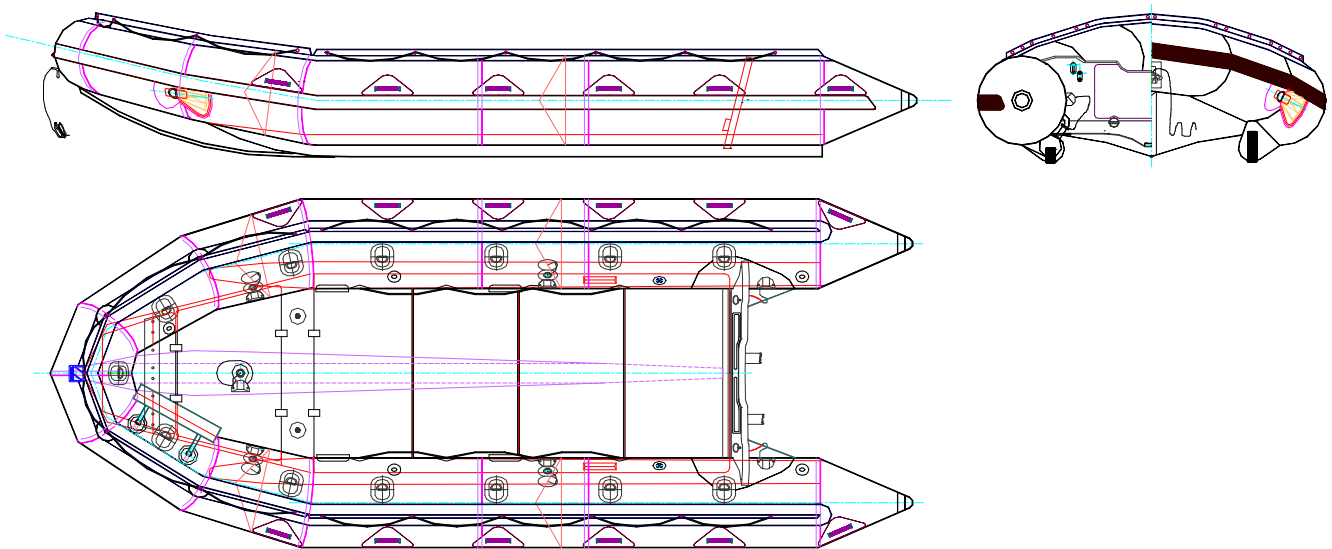
ZODIAC INTERNATIONAL

DIVISION MARINE

ZODIAC FC 530 FUTURA COMMANDO

P/N Z80228

Rev 2 – 21 Sept 07
TECHNICAL DATA SHEET



Combat tested

Well known throughout the world as the definitive Special Forces boat, the FC range is used by more elite soldiers and sailors than any other craft worldwide. It is the only craft of its type that has actually been used in combat in different theatres and comes thru with flying colors. This is a result of its unique patented hull shape and various floor systems that allows it to carry combatants in a variety of missions. The hull shape is especially important as it can get a large load on the plane as well as give the driver unsurpassed maneuverability in different and often dangerous conditions. Continually being updated for its ever-changing roles, the FC range is Zodiac's most recognizable military boat.

The FC 530 P/N Z80228 is available on special order only.

Important Note: Boats available in North America may have different specifications.

The overall appearances of the watercraft depicted in this document are trademarks of Zodiac

THIS MATERIAL CONTAINS PROPRIETARY DATA BELONGING TO ZODIAC INTERNATIONAL. UNAUTHORIZED DISCLOSURE, USE OR REPRODUCTION WILL RESULT IN LIABILITY. ZODIAC RESERVES THE RIGHT TO CHANGE THE SPECIFICATIONS OF THIS TECHNICAL DATA SHEET WITHOUT NOTICE.

Dimensions and weight + or - 3 % (5% on prototype)

page 1 / 4



ZODIAC INTERNATIONAL

DIVISION MARINE

FC 530 FUTURA COMMANDO BOAT DEFINITION

CAPACITY

. maximum number of persons (ISO6185) :	12	12
. maximum payload including engine and fuels (ISO6185) :	1690 kg	3725 lb
. floorboard usable area :	3.585 m ²	38.57 sq ft
. buoyancy tube volume :	2500 l	88 cu ft

DIMENSIONS

. overall length :	5.30 m	17' 5"
. inside length :	3.70 m	12' 2"
. overall width :	2.14 m	7'
. inside width :	1.04 m	3' 5"
. weight empty without cylinder :	180 kg	397 lb
. buoyancy tube diameter :	0.55 m	1'10"
. folded dimensions :without cylinder :	sac 1 bag 1	0.90x1.70 2'11"x5'7"

SAFETY / INFLATION

. number of airtight compartments on main buoyancy tube:	5
. intercommunicating, over/pr, inflation valves :	4
. inflatable keel:	1
. lower tubes :	2
. C02 inflation points :	2
. overpressure valves :	5
. design category (EC 94/25) :	C

ENGINE POWER

. shaft length :	long	20"
. recommended power :	38 kW	50 HP
. maximum power with 4 sections hard deck :	60 KW	80 HP
. maximum weight of engine w/hard deck :	140 KG	308 lbs
. maximum power with 2 engines & hard deck :	2 x 30 KW	2 x 40 HP
. maximum engine weights :	2 x 95 KG	2 x 209lbs
. maximum power with roll-up floor :	38 kW	50 HP
. maximum weight of engine with roll-up floor :	110 KG	242 lbs

THIS MATERIAL CONTAINS PROPRIETARY DATA BELONGING TO ZODIAC INTERNATIONAL. UNAUTHORIZED DISCLOSURE, USE OR REPRODUCTION WILL RESULT IN LIABILITY. ZODIAC RESERVES THE RIGHT TO CHANGE THE SPECIFICATIONS OF THIS TECHNICAL DATA SHEET WITHOUT NOTICE.

Dimensions and weight + or - 3 % (5% on prototype)

page 2 / 4



ZODIAC INTERNATIONAL

DIVISION MARINE

STANDARD EQUIPMENT

FABRIC

- . buoyancy tubes : black , 1670 dtx, polyester, hypalon neoprene
- . speed tubes : black , 940 dtx, polyester, hypalon neoprene
- . bottom : black , 1880 dtx, polyester, hypalon neoprene

TRANSOM BLACK

- . self-bailers, large flow w/scuppers : 2
- . engine mounting plate : 1
- . engine transom pad (marine plywood) : 1 twin-engine

FLOORBOARD

- . 4 sections aluminum floorboard, anodized aluminium : 1
- . 2 sections wooden floorboards, marine plywood : 1
- . bow thrustboard, marine plywood : 1

VALVES

- . buoyancy tube intercommunication / inflation valves (delrin cap) : 4
- . keel inflation valve (delrin) : 1
- . CO2 inflating points : 2
- . overpressure valves : 5
- . connecting hoses from main tube to speed tubes : 2

REINFORCEMENTS

- . all around rubbing strake, flat profile, black : 1
- . flat rubbing strake underneath keel, black : 1
- . flat rubbing strake underneath lower tubes, black : 1 + 1
- . anti splash triangles : 2
- . transom bottom stainless steel protection : 1

THIS MATERIAL CONTAINS PROPRIETARY DATA BELONGING TO ZODIAC INTERNATIONAL. UNAUTHORIZED DISCLOSURE, USE OR REPRODUCTION WILL RESULT IN LIABILITY. ZODIAC RESERVES THE RIGHT TO CHANGE THE SPECIFICATIONS OF THIS TECHNICAL DATA SHEET WITHOUT NOTICE.

Dimensions and weight + or - 3 % (5% on prototype)

page 3 / 4



ZODIAC INTERNATIONAL

DIVISION MARINE

HANDLING

. lateral carrying handles (molded) :	12
. bow carrying handle (plated brass with black coating) :	1
. exterior lifeline (peripheric) :	1
. interior lifeline :	2
. interior large tie down D rings (stainless steel with black coating) :	13

TOWING & LIFTING

. bow large towing D rings (stainless steel with black coating) :	2
. stern large towing D rings (stainless steel with black coating) :	2
. transom lifting points :	2
. bow thrustboard-lifting points :	2

OTHER EQUIPMENT

. foot bellows + hoses :	2
. repair kit with pressure indicator :	1
. paddles (aluminum shaft, plastic blade) :	8
. document pouches :	2
. boat carrying bag :	1

THIS MATERIAL CONTAINS PROPRIETARY DATA BELONGING TO ZODIAC INTERNATIONAL. UNAUTHORIZED DISCLOSURE, USE OR REPRODUCTION WILL RESULT IN LIABILITY. ZODIAC RESERVES THE RIGHT TO CHANGE THE SPECIFICATIONS OF THIS TECHNICAL DATA SHEET WITHOUT NOTICE.

Dimensions and weight + or - 3 % (5% on prototype)

page 4 / 4